

ILLUSTRATED
BLOOMINGTON
ILLINOIS

Compliments of
HAWKS INCORPORATED

ILLUSTRATED
BLOOMINGTON
INDIANA

Illustrated Bloomington

PICTORIALLY SHOWING ITS PICTURESQUE SCENES,
PUBLIC BUILDINGS, CHURCHES, SCHOOLS, PARKS, WHOLESALE and RETAIL
HOUSES, FINANCIAL INSTITUTIONS, HOMES, and INDUSTRIES



Published by
The ILLUSTRATED PUBLISHING CO.

Officers of the Bloomington Association of Commerce 1916

GEO. C. HEBERLING President

R. C. BALDWIN, Vice-President

W. L. MOORE Treasurer

J. H. HUDSON, Secretary

Directors—1916

E. B. HAWK

CAMPBEL HOLTON

ALONZO DOLAN

M. R. LIVINGSTON

T. C. AINSWORTH

C. L. HILLS

G. B. READ

ROGERS HUMPHREYS

E. D. FUNK

W. H. ROLAND

J. J. QUINN

H. D. BUNNELL

GEO. W. PARKER

A. SCHWARZMAN

LYLE JOHNSTONE

MYRON GRIESHEIM

W. H. HOMUTH

CARL H. KLEMM

J. W. GRAPES

WALTER ARMBRUSTER

E. DICKINSON

H. K. HOBLIT

D. D. LEARY

T. S. BUNN

Published by the Illustrated Publishing Co.

Photos by E. M. Moore of the United Photo Shop

Engravings by the Interstate Engraving Co., James Leitch, Proprietor

Printed and bound by Pantagraph Printing and Stationery Co.

ALL OF BLOOMINGTON, ILLINOIS



A Sketch of Bloomington, Illinois

By J. H. HUDSON

SECRETARY BLOOMINGTON ASSOCIATION OF COMMERCE

Bloomington is located in the center of the great state of Illinois, midway between Chicago and St. Louis, with railroads diverging in 14 different directions. The main line of the Chicago & Alton, the Kansas City division of the C. & A., the Freeport division of the Illinois Central, the Kankakee and Chicago division of the Illinois Central, the Peoria and Eastern division of the Big Four, the Sandusky and Peoria line of the L. E. & W., and the Illinois Traction System, one of the most prosperous interurban lines, reaching Peoria on the west, and entering the heart of St. Louis over its own bridge on the south.

It is the county seat of McLean County, the wealthiest agricultural county of not only the United States, but probably of the world. Within a radius of 50 miles are 700,000 prosperous people, of whom probably more own their own homes than could be found in any like circle drawn in any part of any civilized country on the globe.

It has splendid hotels, restaurants, and cafes; a coliseum seating 4,000 people, making it an ideal convention city; two strictly first class play houses, with five other theaters and vaudeville houses, all cleanly, and patronized by the best of people. It boasts four first class clubs, one of them in a new \$50,000 home, and has one of the best street car systems of any town of its size in the middle west.

It owns its own water and electric light plants. Has forty miles of paved streets, a splendid system of ornamental lights throughout the business district, and its streets are resplendent with handsome mammoth shade trees their entire length. Bloomington well deserves her name of "the Evergreen City."

Its schools are its pride. Its twelve ward schools, with a new central High School costing \$400,000.00 are all modern, well-lighted and well ventilated buildings, manned

by a most carefully selected corps of teachers and supervisors. It is the home of the famous Illinois Wesleyan University and the State Normal School. Has four finely equipped Parochial schools, five schools of music and expression of recognized merit, and a large Business College. It has forty churches of various denominations, a \$125,000.00 Y. M. C. A. building and four beautiful parks.

It is not only an industrial city, it is a city of refinement and beautiful homes, a residence city without a peer.

INDUSTRIAL.

From an industrial standpoint, it offers advantages which are of great moment to any manufacturing enterprise. With a large coal mine in its midst, and located on the main lines of the Chicago and Alton and the Illinois Central Railroads, the two largest coal carrying roads in the state, tapping the mammoth coal fields of Illinois, Bloomington stands by itself as a logical manufacturing center from a fuel standpoint.

Soft water, containing but fifteen grains of hardness, and which will not scale boilers, can be had in abundance. Its water works which have just been completely overhauled and made modern in every respect at a cost of \$150,000.00 have a capacity of 10,000,000 gallons daily. This, with a mammoth reservoir of 10,000,000 gallons capacity in reserve, and

with a fire fighting equipment second to none, places Bloomington in the front ranks from a fire-fighting standpoint.

As a manufacturing and jobbing center, it enjoys advantages in the way of freight rates and freight service shared by few. For instance, over night service to and from Chicago, St. Louis, and Indianapolis. Second morning service to and from Dayton, Cincinnati, Kansas City, etc., etc., third morning service to and from New York City,



Home of Bloomington's Association of Commerce

etc., etc. These merely show to what an extent Bloomington is recognized as an industrial center by the railroads.

Electric and gas power can be secured in any quantity at rates as low as the lowest.

All of these, together with labor conditions, and well located factory sites, is placing Bloomington in the front ranks as a manufacturing city.

It has upwards of one hundred industries, with an annual pay roll of \$4,000,000, among which are included car shops, coal mine, candy factory, brass foundry, canning works, brewery, stove works, brick works, creamery, flour mills, tile works, heavy forgings, wood working, furnace works, automatic vacuum cleaners, awnings, carpets, stove fixtures, carriages, ice, blank books, mattresses, coffee and extracts, wagons, patent medicines, plating works, corrugated culverts, machinery, tanks, overalls, shirts, brooms, wood novelties, quilts, soap, stationery, stock food, dips, portable elevators, iron columns, trunks, sash doors and blinds, harness, monuments, furs, sporting goods, candy boxes, furniture, building tile, farm and garden seeds, packing houses, etc., etc.

Its factories ship to Russia, Germany, England, France, Manchuria, Japan, Alaska, and practically all of the South American countries. In fact, Bloomington is known to practically every civilized nation on the globe.

AS A JOBBING CENTER.

Located as it is, in the heart of one of the most prosperous localities in the world, with railroad and interurban facilities second to none, it is but natural that Bloomington should take front rank as a jobbing center. But it is only when the fact is brought out that it is the home of 700 commercial travelers that this is appreciated in its fullest sense.

Like its manufacturing industries, its jobbing lines are of a varied class and cover a large field.

Among the various lines represented are groceries (4), produce (4), fruit (2), millinery (2), agricultural implements (2), cigars (30), flour (2), hardware, machinery, harness, dry goods, heavy hardware, machinist's supplies, threshing machines, vehicles, wagons, coal, coffee, extracts, and dental supplies.

Bloomington distributes more automobiles than any city in Illinois excepting Chicago.

In addition to this, it has the largest nursery interests

of any town in the west, having over 1,000 acres given over to this industry. It is also recognized as one of the best markets for high grade live stock in the central states.

AS A RETAIL CITY.

As a retail city, it stands out by itself. As an up-to-date city of fine homes and refinement, it calls for a high class of merchandising, and has met a ready response from as strictly a high-class business district. No town of its size can boast of as large a number of shoppers coming from a distance, many coming from the very threshold of other trading centers. No town of its size can boast of as large a number and large a line of strictly first-class, well appointed retail houses as Bloomington. All of the railroads entering Bloomington have so arranged their schedules as to have early morning trains to Bloomington and late afternoon trains running out of Bloomington to accommodate this army of shoppers. Two interurban lines also deposit their share of this throng HOURLY. With its 80 passenger trains arriving and departing daily, and its hourly interurban service, few cities offer the transportation facilities to the outside trade that Bloomington offers.

Its newspapers enjoy a larger circulation than any city in the state outside of Chicago and this in itself is an advantage of which its merchants avail themselves.

In 1900, the retail district of Bloomington was devastated by a \$2,000,000.00 fire, a heavier loss in proportion to its population than the great Chicago fire, and yet in two years the district was entirely rebuilt, with up-to-date business blocks, and only one small failure resulted. Do you wonder we are proud of Bloomington? We have something to be proud of.

Bloomington, being the center of such a rich agricultural county, it is but natural that we should pay particular attention to agricultural projects. Consequently, the Commercial Club in 1915 undertook the work of forming an organization among the farmers of McLean County. Meetings were held and an organization was formed known as the McLean County Better Farming Association. The Association now boasts of a membership of 400 of the most progressive agriculturists in the United States.

This organization is managed by a Board of Directors and has one of the best County Agricultural Advisors in



EDWARD R. MORGAN,
DEPARTMENT of ACCOUNTS and
FINANCES



E. E. JONES, Mayor
DEPARTMENT of PUBLIC AFFAIRS



A. G. ERICKSON,
DEPARTMENT of HEALTH and SAFETY



JOHN F. ANDERSON,
DEPARTMENT of STREETS and PUBLIC
IMPROVEMENTS

COMMISSIONERS
CITY of BLOOMINGTON
COMMISSION FORM



R. L. CARLOCK,
DEPARTMENT of PUBLIC PROPERTY

the State who is on the job thruout the entire year assisting the members in solving their problems of soil fertility, stock raising, etc.

The offices of the Better Farming Association are combined with the Commercial Club and it forms a very happy as well as a most practical combination, for thru these organizations the merchant is helping the farmer and the farmer is helping the merchant.

The annual Corn and Grain Show is held jointly by these two organizations and is one of the big events of the year.

The beautiful Corn Palace, a picture of which is shown in this issue, is visited by thousands of people and the instructive Agricultural Lectures and high grade entertainment furnished during the Fall Festival is enjoyed by all.

The great National Tractor Farming Demonstrations have been held in Bloomington during the past two years and approximately one hundred thousand people attended the 1916 Demonstration and were instructed in the use of this modern farm machine.

While Bloomington has enjoyed no mushroom growth, she has shown a substantial gain and, including the beautiful city of Normal which joins us on the north, we have a population of more than 40,000 high class Americans, every one of whom is a booster for the best city of its class in the great Middle West.

The Commercial Club of Bloomington with a membership of 600 progressive Merchants, Manufacturers, and Professional men, has had much to do with the progress and growth of our city.

The members work in harmony for the best interests of our city and the splendid growth and forward strides of Beautiful Bloomington as she is affectionately called, is due to the efforts of our Commercial Club.

BLOOMINGTON AS A WHOLESALE GROCERY CENTER.

Among the industries and businesses of which Bloomington may well be proud, her Wholesale Grocery interests are justly prominent. They are prominent not only because of their size, but also because of the character of the firms engaged in this business, and the importance of the products distributed.

It is perhaps not commonly known that Bloomington can boast of having the oldest Wholesale Grocery House in Illinois, but history proves the point by showing that more than 62 years ago the firm now known as J. F. Humphreys & Co. founded a business which has now spread over several states. From a small beginning this firm has grown steadily and solidly until the goods which it distributes from Bloomington cause many thousands of people from distant points to regard our city as the source of food products of the highest grade, and of best value. To J. F. Humphreys & Co. belongs the honor of having established standards in quality of foods which rival the best our nation affords.

In 1907 Bloomington was proud to welcome another entry into her wholesale grocery world, and gives credit to the Campbell Holton Co. for greatly intensifying and further extending the use of Bloomington foods and merchandise.

But such were the advantages of the Evergreen City in wholesale grocery endeavor, that Hawks Inc. also entered the field in 1913. Their development has been rapid and is already augmenting Bloomington's reputation as a wholesale grocery center.

We are proud to say that the work of these three firms has not been selfish. They have labored for the interests of Bloomington and have been leaders in the education of consumers throughout the state to the appreciation of local retail merchants and good merchandise.

The average volume of business transacted by these three firms is, as far as we can learn, larger than that of any other wholesale grocers in a city of similar size, amounting to nearly five million dollars.

BLOOMINGTON ASSOCIATION OF COMMERCE

THE OBJECT of this Association of Commerce is to further, advance, and promote the industrial, educational, commercial, social, civic and agricultural interests of the City of Bloomington and County of McLean, State of Illinois.

This organization "of, by, and for its members" offers its services to the people of Bloomington and McLean County through the following committees:

CITY PLAN AND DEVELOPMENT
TRADE EXTENTION
PUBLIC HEALTH AND SANITATION
INDUSTRIAL
WELFARE HOME INDUSTRY

RETAIL INTERESTS
CONVENTIONS
LEGISLATIVE
JOBGING INTERESTS
GOOD ROADS
AGRICULTURAL

MEMBERSHIP
FINANCE AND AUDITING
ENTERTAINMENT
ADVERTISING AND PUBLICITY
PUBLIC IMPROVEMENTS

Persons desiring information about Bloomington will be given a detailed, confidential report upon application.



GEO. C. HEBERLING
President



R. C. BALDWIN
Vice-President



W. L. MOORE
Treasurer



J. H. HUDSON
Secretary

Officers 1916



R. C. BALDWIN
President



M. R. LIVINGSTON
Vice-President



H. K. HOBLET
Treasurer



J. H. HUDSON
Secretary

Officers 1917

BLOOMINGTON ASSOCIATION OF COMMERCE



D. W. SNYDER



A. E. MERCHANT



E. MARK EVANS



L. S. KUHN



LEROY G. WHITMER



J. E. LOCKWOOD

Directors Elected for 1917-18



CARL KLEMM



MYRON GRIESHEIM



LYLE JOHNSTONE



E. DICKINSON



HARVEY BUNNELL



EUGENE FUNK



M. R. LIVINGSTON



C. L. HILL



ROGERS HUMPHREYS



A. SCHWARZMAN



W. H. ROLAND



T. S. BUNN

Directors Bloomington Association of Commerce, 1916



JAS. J. QUINN



WALTER ARMBRUSTER



W. H. HOMUTH



E. B. HAWKS



G. B. READ



D. D. LEARY



ALONZO DOLAN



JOHN W. GRAPES



H. K. HOBLIT



GEO. W. PARKER



CAMPBELL HOLTON



T. C. AINSWORTH

Directors Bloomington Association of Commerce, 1916



D. O. THOMPSON Agricultural Advisor

WM. BRIGHT, Assistant Secretary

J. B. HAVENS, Credit and Collection Department

SECTIONAL VIEW OF BLOOMINGTON ASSOCIATION OF COMMERCE OFFICES



THEODORE KEMP, A.B., D.D., LL.D., President

ILLINOIS WESLEYAN UNIVERSITY

BLOOMINGTON, ILLINOIS

(Founded in 1850)

This Methodist School offers strong courses in College, Academy, Music, Domestic Science, Domestic Art, and Law. This fall, courses were opened in Civil, Mechanical and Electrical Engineering. Two years of the regular four year courses can be obtained here. Full credit for this work is given at the University of Illinois and other standard schools. The first two years of a four year's Agricultural course may also be obtained here. A Pre-Medical course has been arranged fitting students for the best medical colleges in the country. There are unexcelled advantages here in the sciences and in the regular work of the college. Within the last eight years over \$1,000,000.00 has been added to the resources of the school. \$900,000.00 has come to the school within the last five years. Nearly \$5,000 worth of free

scholarships will be given to deserving students this year. There are many opportunities for self-help. Expenses are moderate.

Kemp Hall is one of the most elegant and sumptuous halls for women in the West.

The enrolment this fall is already 33% larger than a year ago. The freshmen class is by far the largest in the history of the school. It is over 60% larger than last year. A new Gymnasium is to be built soon. This is a school with a Christian atmosphere. Christian character is exalted. The work of the school is of the highest intellectual standard, but one of the great purposes is to develop young men and women of Christian character. For catalogue, descriptive literature, etc., write President Theodore Kemp, Bloomington, Illinois.



Student Body College Liberal Arts



Science Hall



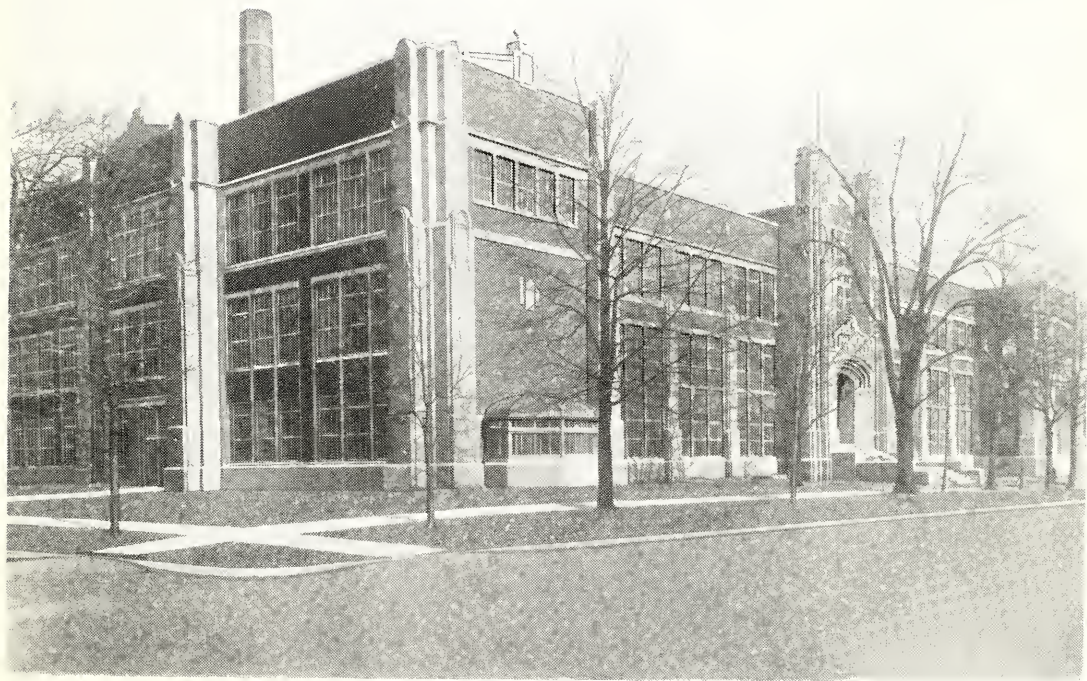
Kemp Hall—Girls' Dormitory Geo. H. Miller, Architect

ILLINOIS WESLEYAN UNIVERSITY



Main Building

ILLINOIS WESLEYAN UNIVERSITY

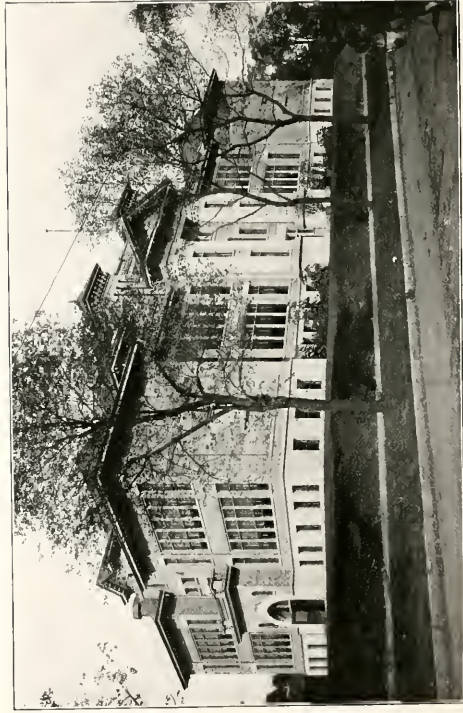


New High School. Cost \$400,000.00



A. L. Pillsbury, Architect

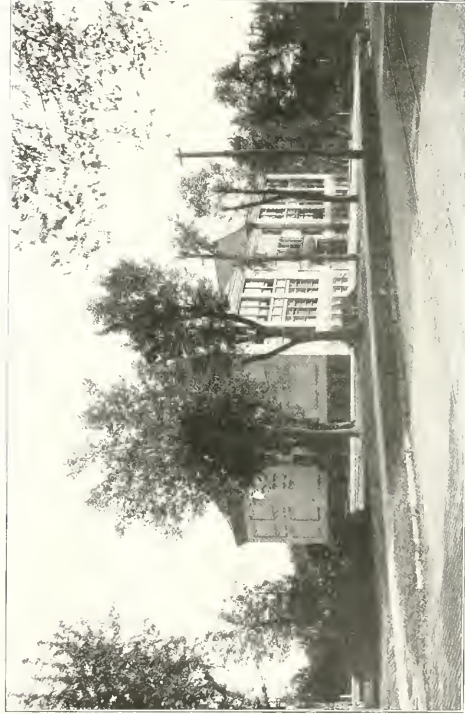
Irving School



Edwards School



Old High School



Franklin School



St. Joseph's Academy



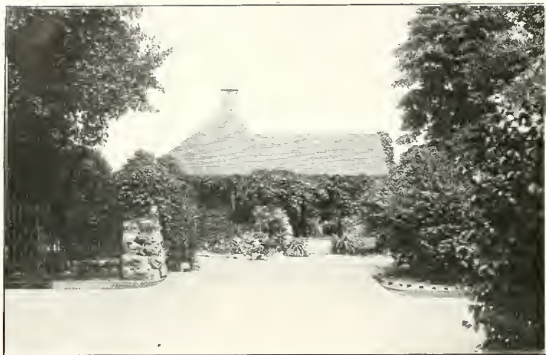
Gymnasium at State Normal

Geo. H. Miller, Architect



A. L. Pillsbury, Architect

PEOPLES BANK OF BLOOMINGTON



Lodge at Entrance



Looking toward Entrance



Looking across Sections 15 and 16



Looking south across Section 16

BLOOMINGTON CEMETERY ASSOCIATION

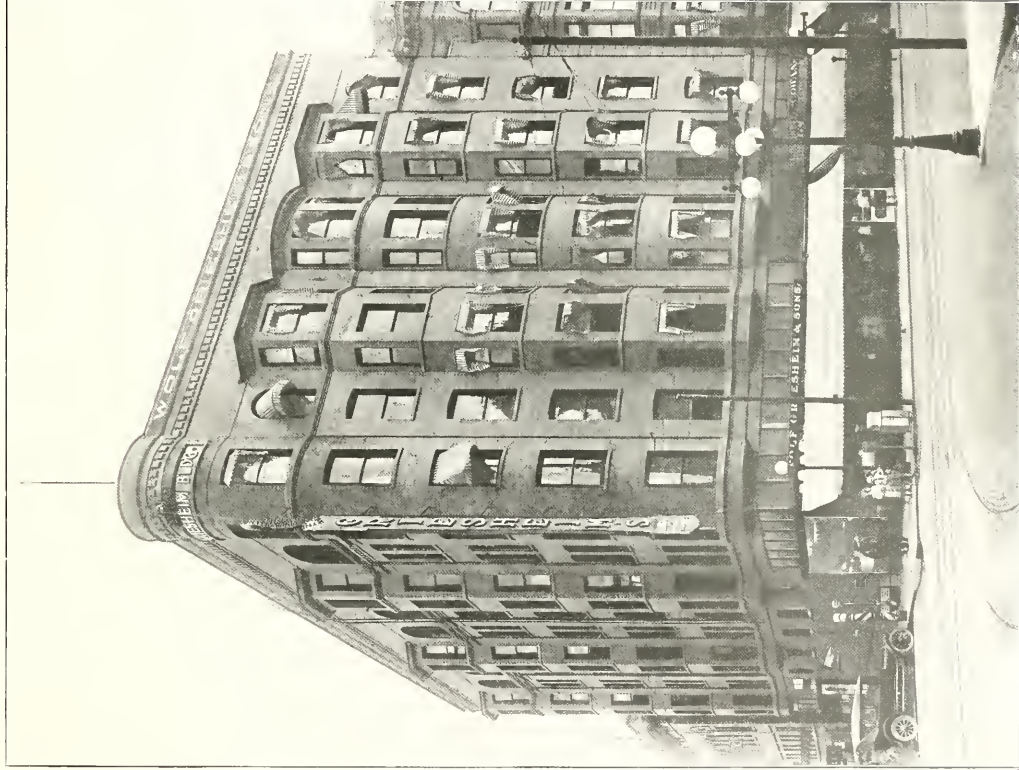


The Home of the Overland and Willys Knight

C. U. WILLIAMS & SON CO., Distributors



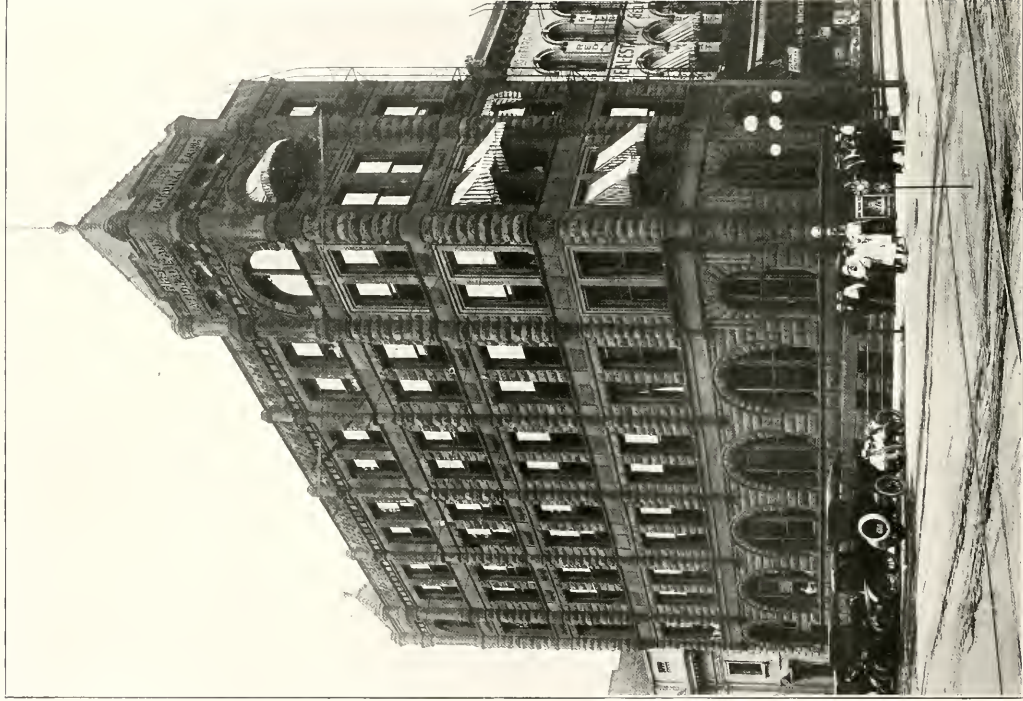
THE DAILY BULLETIN—Exterior and Interior Views



GRIESHEIMS

Bloomington's Greatest Clothiers

The Home of Hart, Schaffner & Marx Clothes



FIRST NATIONAL BANK BUILDING





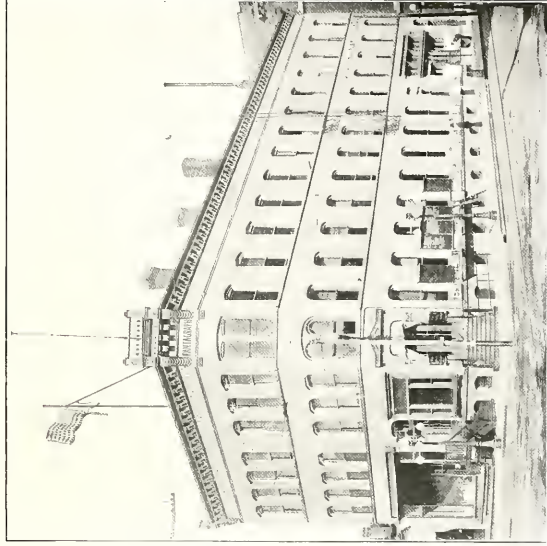
FIRST NATIONAL BANK BUILDING



Part of the Immense Teaming Outfit of the C. B. Hamilton Transfer Co.—“He Moves Everything.”

The Daily
Hautaugraph
BUILDING

For over seventy
years recognized
as the Leading
Newspaper of
Central Illinois.



COUNTING ROOM—The Daily Hautaugraph



A. LIVINGSTON & SONS NEW BUILDING
SOUTH SIDE OF SQUARE

A. L. Pillsbury, Architect

Bloomington's Leading Dry Goods Retailers



Factory and Wholesale Building

OVERALLS AND PANTS

Klemm

SHIRTS AND JACKETS

Manufactured by

C. W. KLEMM

Bloomington, Illinois



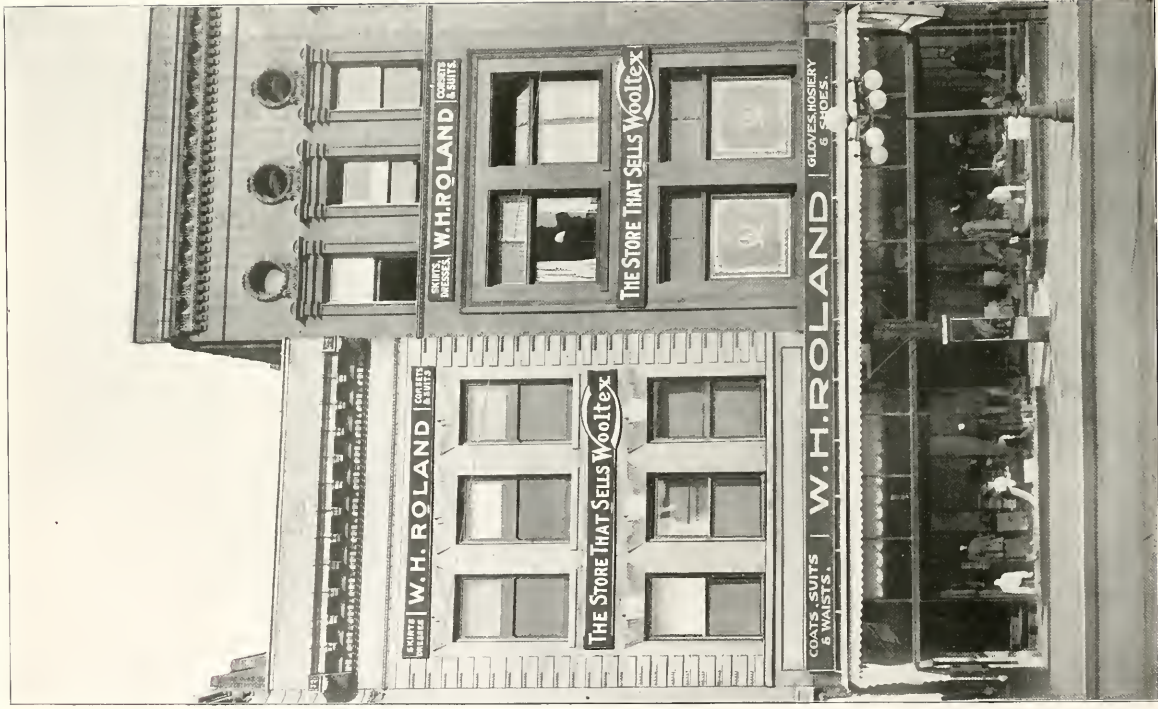
Gas Plant of the Union Gas & Electric Co.

Home of the
UNION GAS & ELECTRIC CO.
316 NORTH MAIN STREET



Display Room of Gas Appliances and Fixtures Second Floor

UNION GAS & ELECTRIC CO.



W. H. ROLAND

This is a Big Specialty Store.—Selling Everything that Misses and Ladies Wear all Ready to Wear.



MY STORE. Corner Center and Grove Streets
Bloomington's Largest Department Store



Geo. H. Miller, Architect

HILLS HOTEL & CAFE—Open till Midnight
Orchestra. Party Work Solicited

GERMAN AMERICAN BANK



Interior view of German American Bank

 <p>ED. P. FAHEY</p>	 <p>A. H. HOOPES</p>	 <p>ALBERT WOLK</p>	 <p>FRANK OBERNDORFER</p>	 <p>CHAS. F. GAGLE</p>	 <p>G. BUESCHER</p>	 <p>PAUL F. BEL</p>	 <p>ADOLPH WOCHNER</p> <p>Cashier</p>
--	---	--	--	---	--	---	--

<p>Opened for Business May, 1st, 1902</p>	<p>January, 1903, \$178,000.00</p> <p>January, 1904, 381,000.00</p> <p>January, 1905, 439,000.00</p> <p>January, 1906, 572,000.00</p> <p>January, 1907, 685,000.00</p> <p>January, 1908, 738,000.00</p> <p>January, 1909, 1,000,000.00</p> <p>January, 1910, 1,150,000.00</p> <p>January, 1911, 1,255,000.00</p> <p>January, 1912, 1,300,000.00</p> <p>January, 1913, 1,300,000.00</p> <p>January, 1914, 1,435,000.00</p> <p>January, 1915, 1,435,000.00</p> <p>January, 1916, 1,700,000.00</p> <p>January, 1917, 1,700,000.00</p>
---	--

<p>DEPOSITS</p>	<p>January, 1903, \$178,000.00</p> <p>January, 1904, 381,000.00</p> <p>January, 1905, 439,000.00</p> <p>January, 1906, 572,000.00</p> <p>January, 1907, 685,000.00</p> <p>January, 1908, 738,000.00</p> <p>January, 1909, 1,000,000.00</p> <p>January, 1910, 1,150,000.00</p> <p>January, 1911, 1,255,000.00</p> <p>January, 1912, 1,300,000.00</p> <p>January, 1913, 1,300,000.00</p> <p>January, 1914, 1,435,000.00</p> <p>January, 1915, 1,435,000.00</p> <p>January, 1916, 1,700,000.00</p> <p>January, 1917, 1,700,000.00</p>
-----------------	--

Directors of German American Bank

GERMAN AMERICAN BANK

Capital, Surplus and Undivided Profits, \$290,000.00

Three Per Cent Paid on Time Deposits



A. L. Pillsbury, Architect

Residence of E. Mark Evans



Residence of C. L. Hills, 406 W. Jefferson Street



Interior of Capt. Hills' Den on W. Jefferson Street



A. L. Pillsbury, Architect

STATE NATIONAL BANK

BLOOMINGTON, ILLINOIS
109-111 EAST WASHINGTON STREET

Capital,	\$150,000
Surplus,	200,000

MEMBER FEDERAL RESERVE BANK
TOTAL RESOURCES \$1,700,000
UNITED STATES DEPOSITORY



Entrance to Banking Room and Safe Deposit Vault.



Residence of Sam E. Livingston



A. L. Pillsbury, Architect
Residence of Milton R. Livingston



Geo. H. Miller, Architect

Residence of Mrs F. X. Wochner



Geo. H. Miller, Architect

Residence of Adolph Wochner



Stone Bridge in Miller Park



Main Building



New Fire Proof Building

A. L. Pillsbury, Architect

DR. GEORGE B. KELSO,
Surgeon and Superintendent

DR. ANNIE E. KELSO,
Physician

The KELSO SANITARIUM

A Private Hospital—Fifty Beds
New Fire Proof Building

Fully Equipped for the Treatment and
Care of Medical and Surgical Diseases.

Tuberculosis and Contagious Diseases are Not Admitted.



Main Entrance



Residence of R. C. Baldwin



Residence of Guy Carlton
A. L. Pillsbury, Architect



Residence of L. E. Slick



Residence of J. H. Hudson

Ford

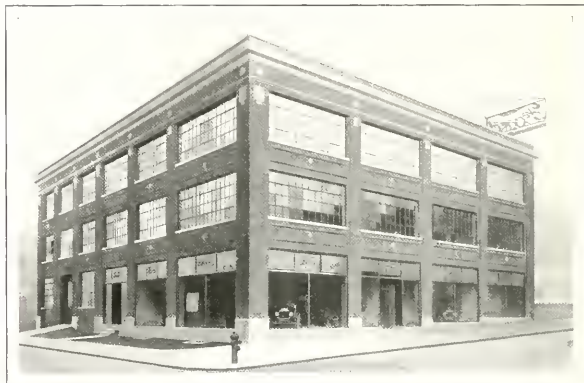
THE UNIVERSAL CAR

Chassis, -	\$325.00	Coupelet, -	\$505.00
Runabout, -	345.00	Town Car, -	595.00
Touring Car, -	360.00	Sedan, -	645.00

These prices f.o.b. Detroit are positively guaranteed against any reduction before August 1, 1917, but there is no guarantee against an advance in price at any time.



The value of an attractive Display Room is given full attention in this L. M. S. Motor Company's establishment, Bloomington, Ill., the interior of which is shown above



The building of the L. M. S. Motor Company, Bloomington, Ill., a splendid type of Ford agency construction.

L. M. S. MOTOR COMPANY

FORD DISTRIBUTORS

JEFFERSON and ROOSEVELT

Ford Exclusive Agents for
McLean and Woodford Counties, Illinois



CEDAR CREST

LOCATED between Normal and Bloomington, which is the most desirable residence district, having Clinton boulevard to the south and Broadway to the north. These two streets are pleasure drives and the only boulevard streets in the city.

These lots are located on high ground with good natural drainage, shade trees already grown; no dirt, smoke or other disturbance, and with the best street car service in the city; surrounded by beautiful homes and having reasonable building restrictions.

For Prices and Terms see

B. M. KUHN & SON

405 Unity Building

Telephone 307-J

IN BUYING A HOME you should locate in that part of the city where growth and development are assured, and where adjoining improvements will enhance and multiply the value of your property.

CEDAR CREST offers to the purchaser all of these inducements for either a home or a profitable investment.

DO NOT HESITATE as this is a rare opportunity and one that may never be offered again, as this is the only addition of its kind that has beautiful curved drives and landscape effects.

For Prices and Terms see

B. M. KUHN & SON

405 Unity Building

Telephone 307-J





Panoramic View of Clinton Place



Cedar Crest

CEDAR CREST ADDITION



Representative Homes in Cedar Crest



PICTURESQUE
VIEW
OF FELL AVENUE
BORDERING
WEST SIDE
OF CEDAR CREST

CEDAR CREST ADDITION

BROADWAY
BOULEVARD
EXTENDING
NORTH
OF CEDAR CREST



7114 S
ANNOLD
1916



Interior of WILL H. HOMUTH JEWELRY CO.



View of Grounds, "The Oaks"



"The Oaks"—residence of Howard Humphreys



BAUGHFELL BUMBLE BEE
Imported Champion
Wire Haired Fox Terrier

MID-OAKS KENNEL *and* POULTRY FARM

Located two and one-half miles south of the Court House
on Main street and one-half mile west.



MID-OAKS PICKETT BOY
Airedale Terrier



EXTERIOR KENNEL

INTERIOR KENNEL



MID-OAKS TOPSY
English Blood Hound

Breeders of
PURE BLOODED *and* REGISTERED SPORTING DOGS
and
HIGH CLASS POULTRY

Property of
Rogers Humphreys *and* J. B. Kimes



MID-OAKS RED-HEAD
Irish Setter



A. L. Pillsbury, Architect

THE HOME OF WEDDING RING AND WISH BONE GOODS

J. F. Humphreys ^{AND} Co.

Wholesale Grocers

Bloomington, Illinois



Sales Force, J. F. HUMPHREYS AND CO., Wholesale Grocers

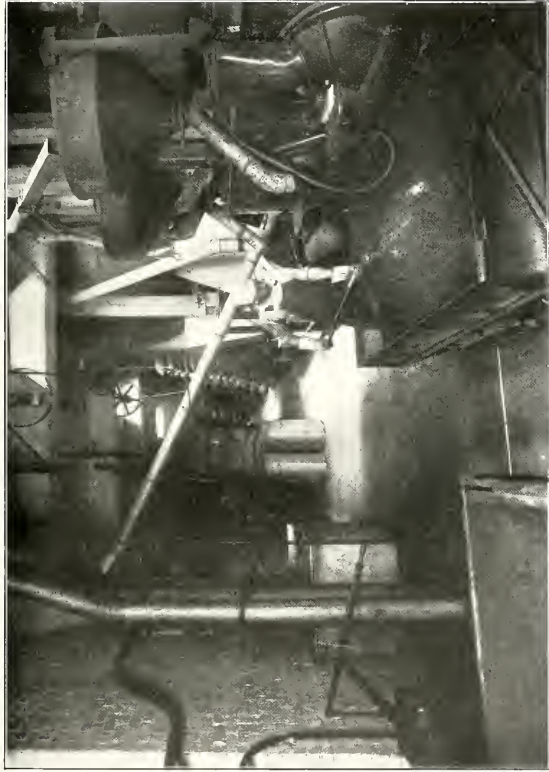
First Row:—W. B. Giersch, H. C. Krudup, E. S. Jones, V. B. Robison, M. Raisbeck, A. K. Lundborg, R. Stewart, J. LaTeer, E. B. McAtee, H. E. Henson, W. H. Blackburn
Second Row:—F. E. Kelly, C. Martin, A. W. Huffman, R. H. Steed, H. A. McLaughlin, A. M. Winter, M. H. Bangs, A. Peterson, G. Feagans, D. Daniels, R. E. Potts, F. Leitch, W. T. Stutesman
Third Row:—E. Bischoff, O. W. Johnson, O. F. Schalk, J. J. Miller, F. R. Bean, Rogers Humphreys, C. M. Bowen, A. Sauter, D. D. Bachman, C. W. Johnston, W. W. Barrett



Sales and Buying Departments



Section of Canned Goods Floor



Section of Coffee Roasting Department. Daily Capacity 10,000 Pounds.



Section of Storage Building for Green Coffee.



W. S. HARWOOD LUMBER *and* COAL CO.

The OLDEST BUILDING MATERIAL FIRM DOING BUSINESS IN McLEAN COUNTY





KrebsCoffee
Company

WILLIAM KREBS

"Every Cup a Smile"

Proprietor



ESTABLISHED 1865

GEO. AGLE & SONS (Inc.)

WHOLESALE and RETAIL DEALERS IN FEEDS and SEEDS

207-209 South Center Street, Bloomington, Ill.

Feeds

BRAN
MIDLINGS
OIL MEAL
COTTON SEED
TANKAGE
DAIRY FEED
MOLASSES FEED
HAY

Seeds

CLOVER
TIMOTHY
ALFALFA
RAPE
COW PEAS
SOY BEANS
ALL FIELD
VARIETIES

Bell Phone 130

Kinloch Phone 350



President's Office and Accounting Department



Sales Department Display Room



Head Buyer's Department



Sample and Packing Room

HAWKS INCORPORATED, Wholesale Grocers

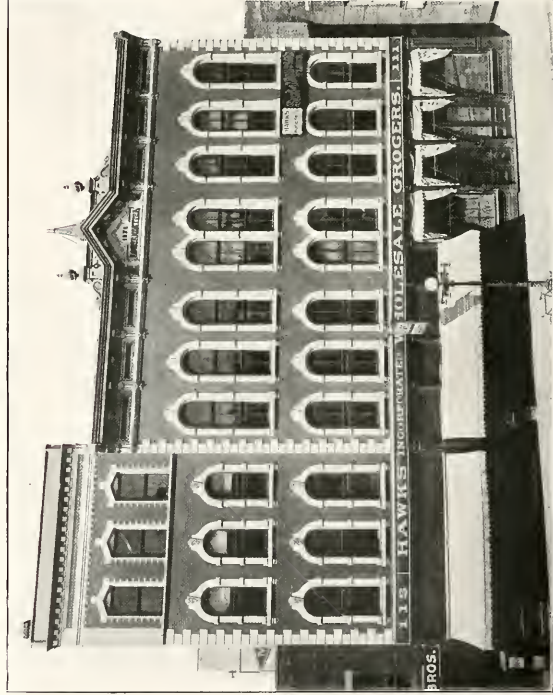


HAWKS INCORPORATED
Office, Sales, and



Warehouse Employees

Wholesale Grocers



Distributing Point of Hawks and Bobolink Labels

Geo. H. Miller, Architect



Interior View in Warehouse

HAWKS INCORPORATED

Wholesale Grocers



Interior view of Store of GUY CARLTON, 528 North Main Street
EVERYTHING ELECTRICAL



Fixture Display Room

R. C. BALDWIN, President

Central Mill & Elevator Co.

H. S. ECKART, Sec - Treas

901 East Front Street

Bloomington - Illinois

Elevators at

**HOLDER and
BROKAW**

on L. E. & W. Ry.

BLOOMINGTON

on Illinois Central

**SHIPPERS CORN, OATS
CAR LOTS**

Dealers in
all kinds
Mill Feeds,
Hay
Straw, etc.



Jobbers of

High Grade Flour

Occident

Costs More, Worth It

Northern Chief

Highest Quality
of Hard Kansas Wheat

Updike's Best

Universally
Gives Satisfaction

WHOLESALE AND RETAIL

Flour : Mill Feeds : Grain : Corn Meal : Poultry Food

They have a trade built upon quality

Ask your dealer about it



A. L. Pillsbury, Architect

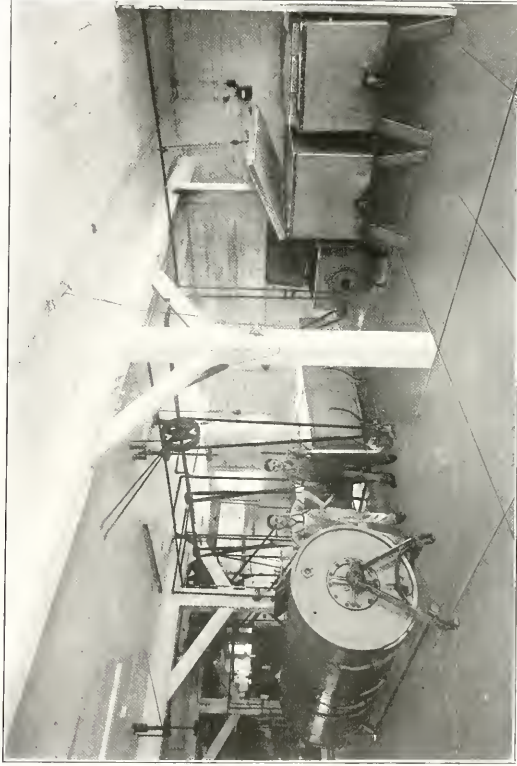
The DODGE DICKINSON COMPANY

Wholesale manufacturers of original and exclusive designs
of COUCHES and DAVENPORTS. Also MATTRESSES, BED SPRINGS, PILLOWS, etc.

CORN BELT CREAMERY



Office



Churning Room

CORN BELT CREAMERY



HENRY A. RIESE

FRUITS AND PRODUCE

Complete line of RELIABLE FIELD AND GARDEN SEEDS in any quantity

Bloomington, Illinois



A. L. Pillsbury, Architect Masonic Temple



Soldiers Orphans' Home Main Building, Normal



H. Miller, Architect Pavilion at Miller Park



A. L. Pillsbury, Architect Y. M. C. A.



VIEW OF
OFFICE AND WAREHOUSE
CAMPBELL HOLTON & CO
WHOLESALE GROCERS

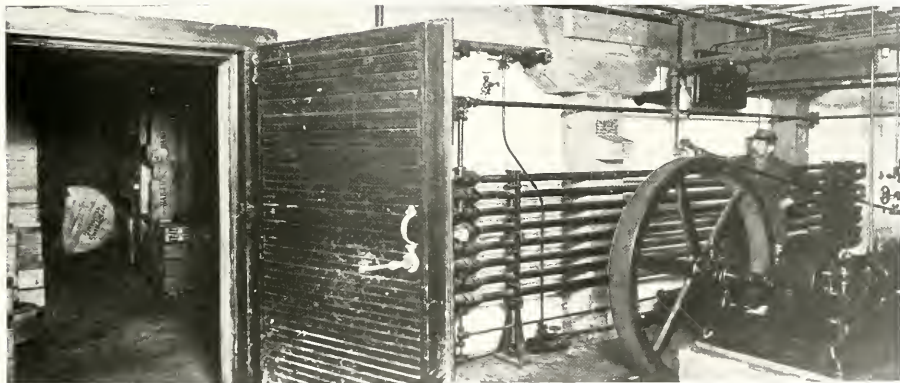


VIEW IN OFFICE

CAMPBELL HOLTON & CO., Wholesale Grocers



VIEW IN SAMPLE ROOM
 CAMPBELL HOLTON & CO.
 WHOLESALE GROCERS



VIEW OF
 COLD STORAGE PLANT

CAMPBELL HOLTON & CO., Wholesale Grocers



City Hall



Central Fire Station Geo. H. Miller, Architect



McLean Co. Court House

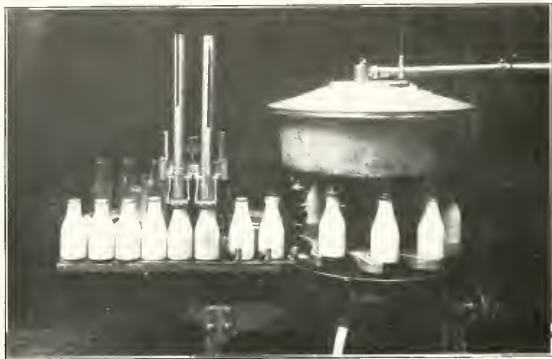


Post Office



Plant of BLOOMINGTON PRODUCE CO.

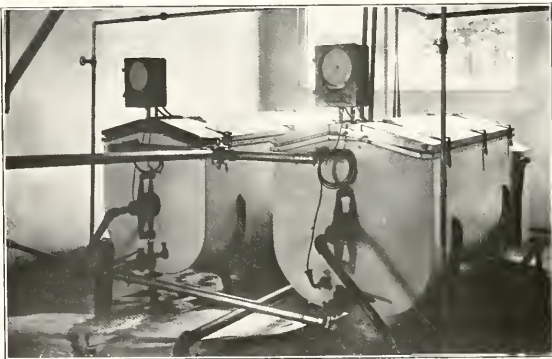
512-514 S. Main Street



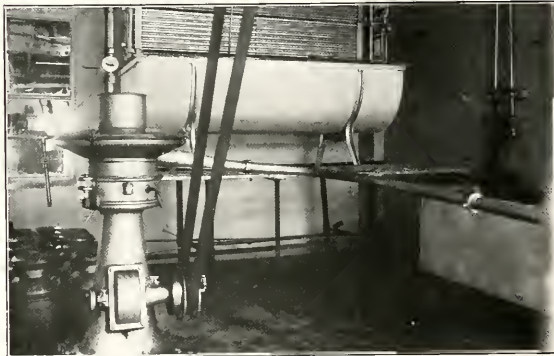
Improved Sanitary Milk Bottle filler and capper. Snow & Palmer Co.



Plant of the Snow & Palmer Company, Bloomington, Ill.



Milk Pasteurizers, equipped with recording thermometers. Snow & Palmer Co.



Tubular Cooler (rear) and Centrifugal Milk Clarifier, in Pasteurizing Room

PLANT OF THE SNOW & PALMER CO.



Geo. H. Miller, Architect

BLOOMINGTON PLANT of PAUL F. BEICH CO.

Makers of Beich's Chocolates

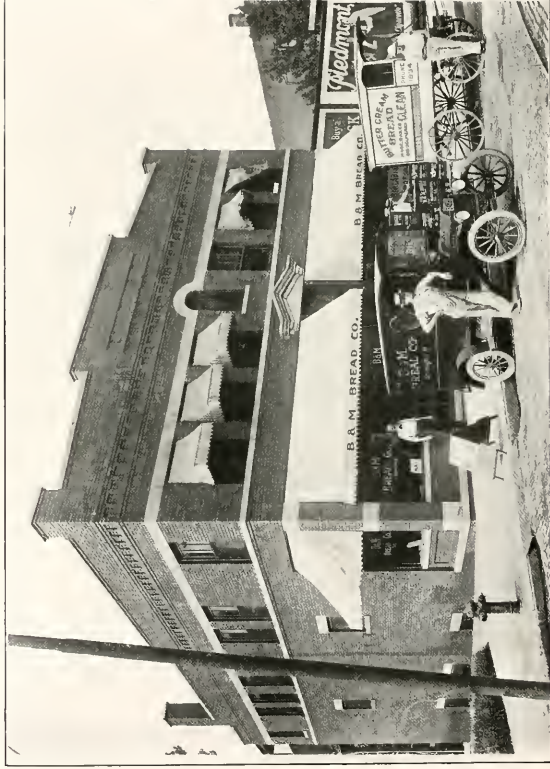
BLOOMINGTON

CHICAGO



INTERIOR OF V. GRIFFIN'S BOOK and ART SHOP

Books, Stationery, Wall Paper and Sundries



The B. and M. BREAD CO.

High Grade Bread

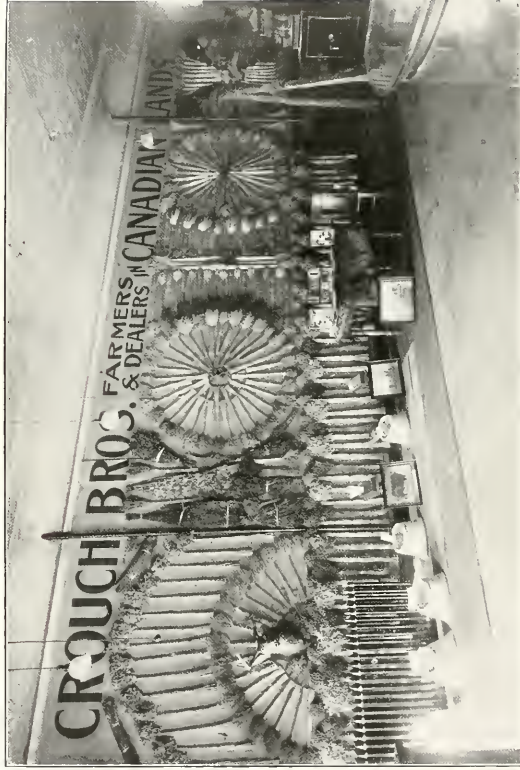
Wholesale and Retail

Bloomington, Illinois



W. P. GARRETSON, Jeweler and Silversmith

309 N. Main Street



SAMPLES OF GRAINS GROWN ON THE FARMS OF
CROUCH BROS., Manitoba, Canada
 On display in their Bloomington office, 425 North Main Street



The SCHUELER WINDOW VENTILATOR

Meets the demand for a light, portable ventilator that may be used in home and office windows. They will furnish you with plenty of fresh air under all conditions of weather and temperature. The annoyance of drafts, rain or snow is avoided by their use

The SCHUELER WINDOW VENTILATOR COMPANY

Manufacturers

BLOOMINGTON, ILLINOIS



Plant of AMERICAN FOUNDRY & FURNACE CO.

Manufacturers of HEATING, VENTILATING and SANITARY APPARATUS FOR SCHOOLS and
WARM AIR HEATERS FOR RESIDENCES



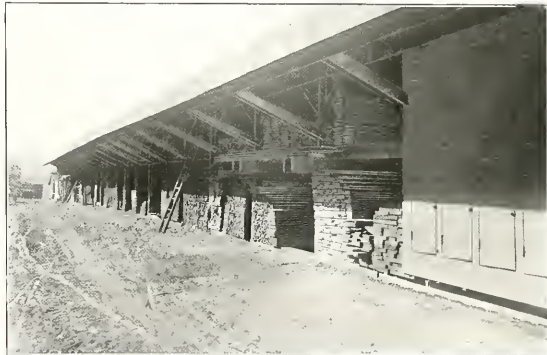
Exterior Rogers Wall Paper Co.



Interior Rogers Wall Paper Co.

ROGERS WALL PAPER CO.
Picturer and Framer

311 NORTH MAIN STREET



PARKER BROS., Lumber and Coal Yards



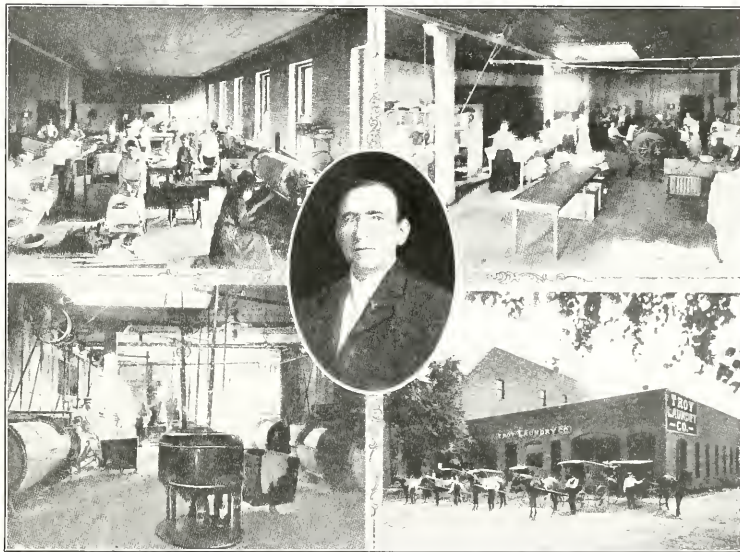
We Make a
Specialty of
Children's
Hair Cutting
and Bobbing



Wholesale
and Retail
Barber Supplies

Finest and Most Modern Barber Shop in the City. WALTER ARMBRUSTER, Proprietor, 110 East Front Street

FRENCH
DRY CLEANING
A
SPECIALTY

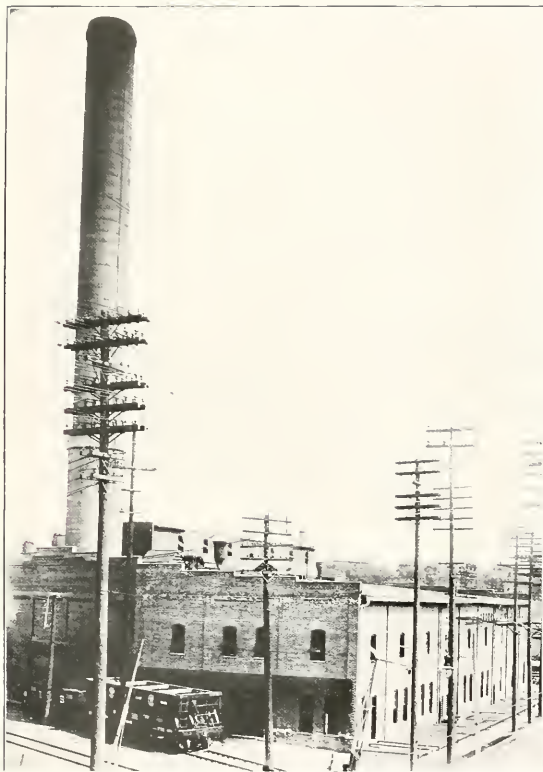


1. Ironing Room
2. Wash Room

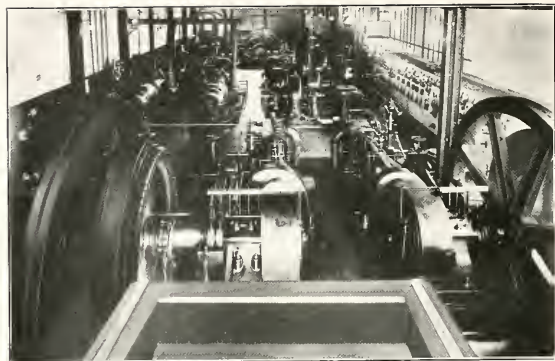
J. W. GRAPES, Pres and Sec.

3. Assorting Department
4. Laundry and Dry Cleaning

PARCEL POST
DELIVERY
TO
ALL PARTS



Power House of the Bloomington and Normal Railway and Light Company



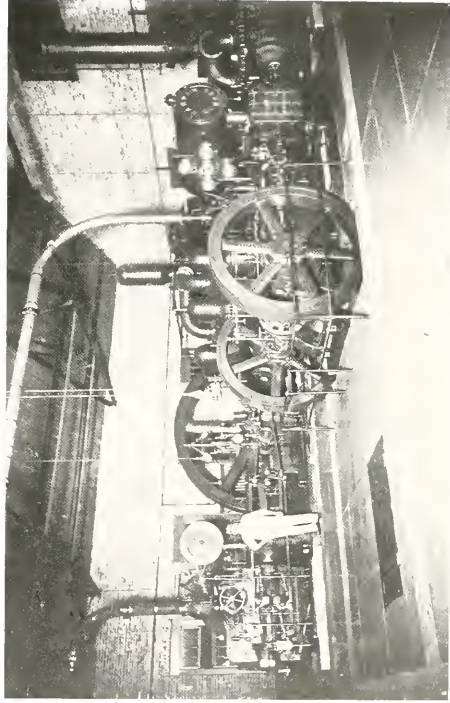
Dynamo Room of the Bloomington and Normal Railway and Light Company



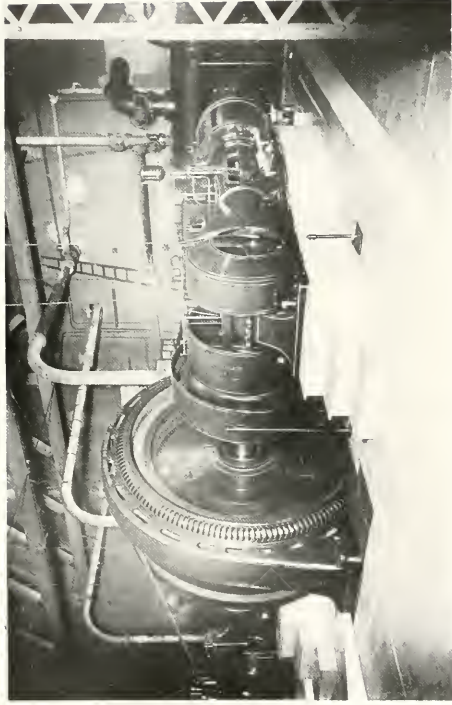
Boiler Room of the Bloomington and Normal Railway and Light Company



Main Building, Bloomington Water Works and Electric Light Plant



The Six and Four Million Gallon Pumps—Bloomington Water Works



The Electric Engine—Bloomington Water Works



The Boiler Room—Bloomington Water Works

Geo. H. Miller, Architect

Baptist



A. L. Pillsbury, Architect Second Christian



First M. E.

Bloomington Churches

Congregational



German Lutheran
Geo. H. Miller, Architect



German M. E.



Grace M. E.

Geo. H. Miller, Architect

Bloomington Churches

Second Presbyterian



Jewish Synagogue



Unitarian

Bloomington Churches

Swedish Lutheran



First Presbyterian

Geo. H. Miller, Architect

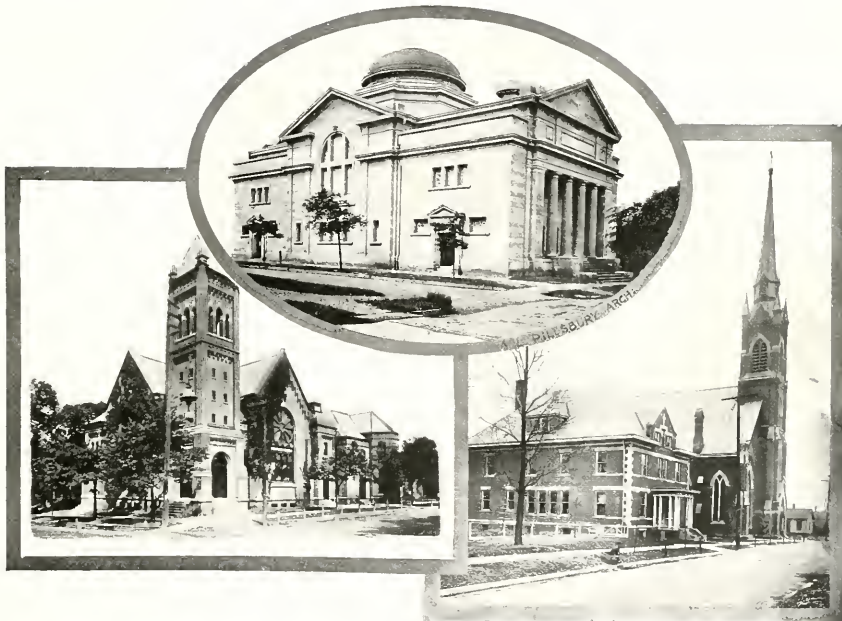


Centennial Christian

Holy Trinity

Bloomington Churches

Christian Science A. L. Pillsbury, Architect



First Christian

German Catholic Geo. H. Miller, Architect

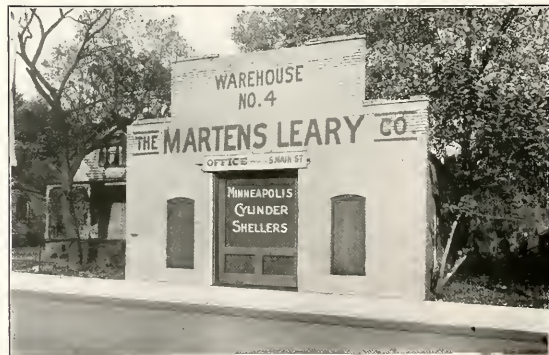
Bloomington Churches



316-18-20 South Main St.



207-9-11 E. Front



401 S. East



Washington Street Display Windows, G. H. READ & BRO.



THE ILLINOIS STATE NORMAL UNIVERSITY

THE HEBERLING

ROAD TO WEALTH



G. C. HEBERLING
President



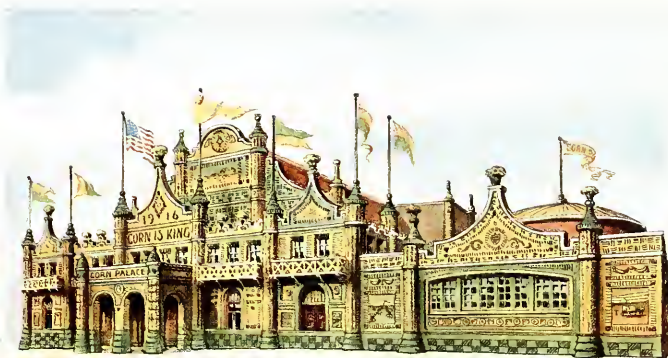
C. W. WEBB
Secretary



THE HOME OF THE HEBERLING PRODUCTS

THE HEBERLING

ROAD TO WEALTH



A. L. PILLSBURY, ARCHT.

BLOOMINGTON CORN PALACE, 1916

Building 120x160 feet.

Entirely covered with Corn, Oats, Alfalfa and Grasses.

This building contained exhibits of grain from all parts of the state and was visited by thousands of people.

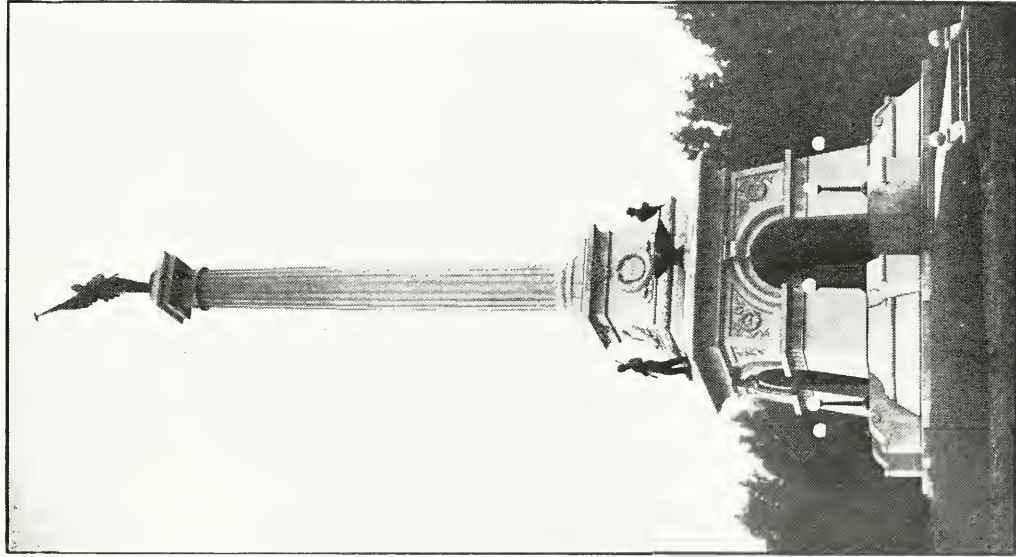
Daily Concerts and High Class Vaudeville, together with Agricultural Lectures formed the program. October 18th-28th.



View of the Wonderful TRACTOR DEMONSTRATION held near Bloomington in August of 1916, under the auspices of the Bloomington Association of Commerce. More than 75000 visitors attended this demonstration.



CHICAGO AND ALTON PASSENGER DEPOT



Soldiers' and Sailors' Monument, Muller Park

This business occupies the three floors and basement of No. 210 and two upper floors of No. 208 North Center as well as one entire floor for storage in the large Johnson Transfer Building South Center St. with shipping platform along the "Big Four" tracks.





One of the Fountains in Miller Park



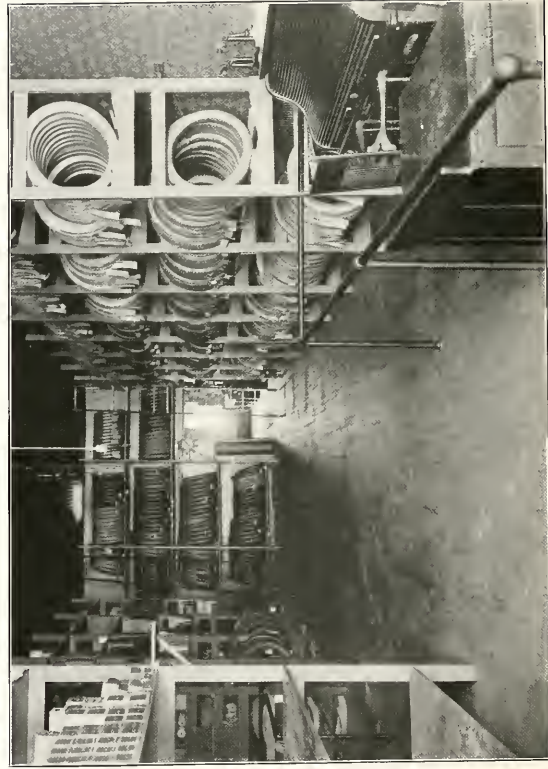
Campbell Holton Residence



A. B. Hoblit Residence

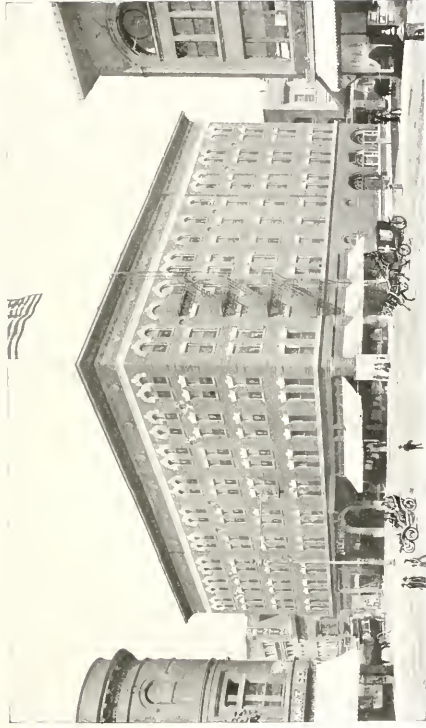


A Portion of the Sewing Room of the C. W. Klemm Factory



GOOD BROS., Automobile Tires

610 N. Main Street



Illinois Hotel



Club House—Bloomington Country Club



Yards of W. J. DAMBOLD

710 South McLean Street



The Irvin Theatre



Majestic Theatre



Chatterton Opera House



The KELSO SANITARIUM



A Scene at Miller Park



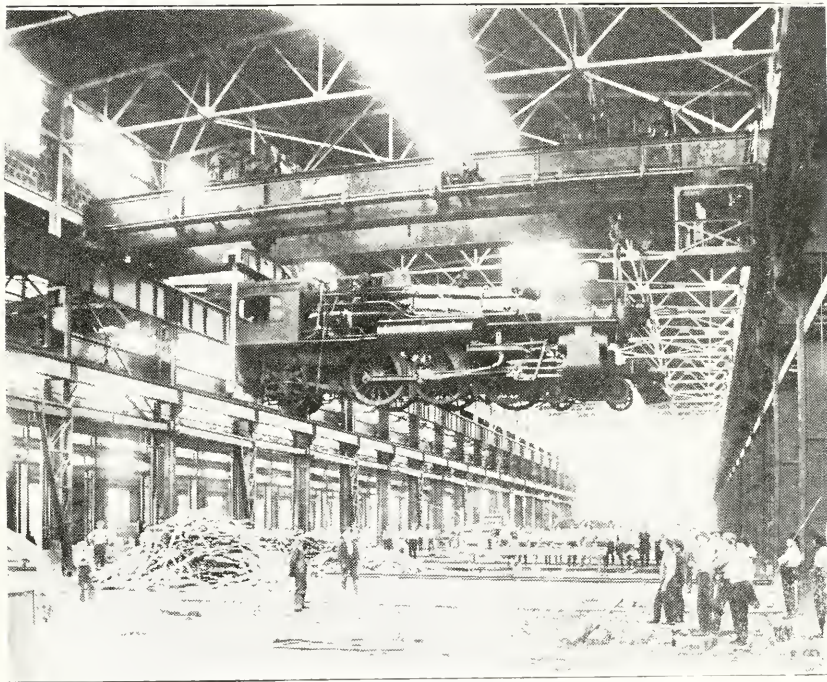
The Pavilion at Miller Park, from Across the Lake



Bloomington Club

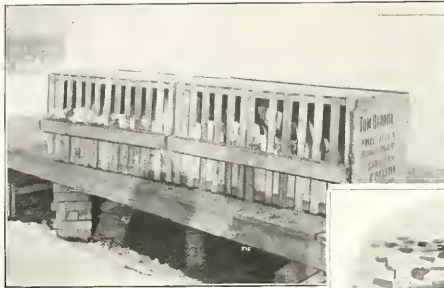


The Trotter Fountain



An Interior View in one of the many buildings of the Immense Shops of the Chicago & Alton

Funk's Seeds
Produce
Greater Yields



Largest Seed Growers
in the World



Funk's High Yielding Seed Corn
is the most satisfactory to buy



Bloomington Warehouse
and Office

Located that customers
get prompt delivery with
no transfer charges.



FUNK BROS. SEED CO., Bloomington, Ill.



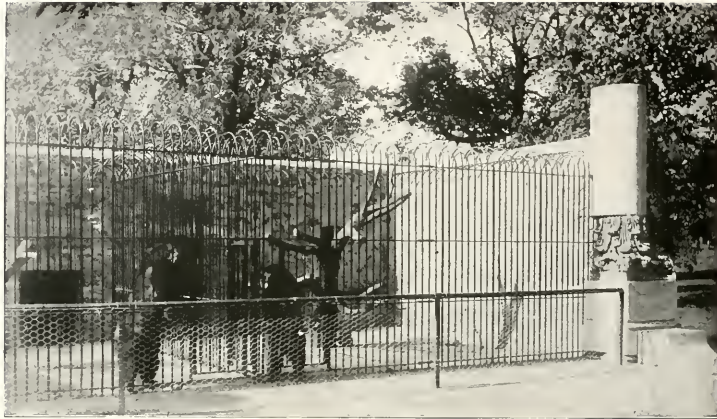
The place for Good Photographs at reasonable prices
501 1/2 North Main Street



COMMERCIAL HOTEL, A. L. Moore, Proprietor



Dining Room, Commercial Hotel



Bear's Cage

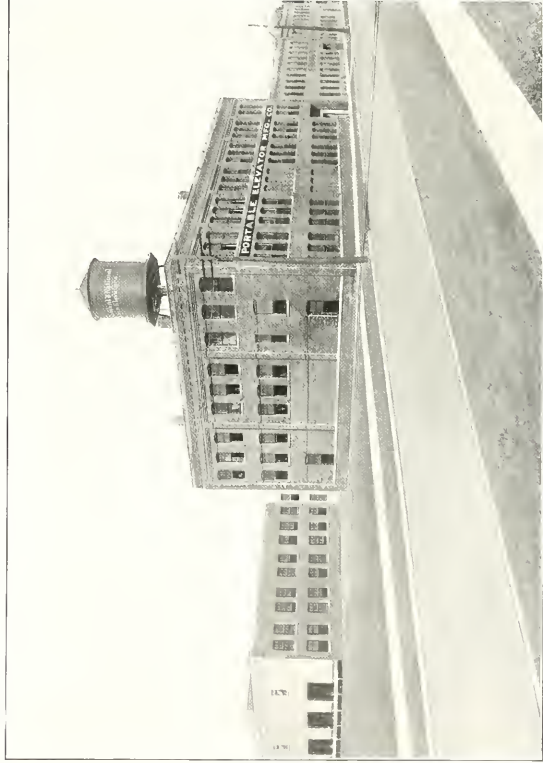
SCENES IN
MILLER PARK



Promenade Walk

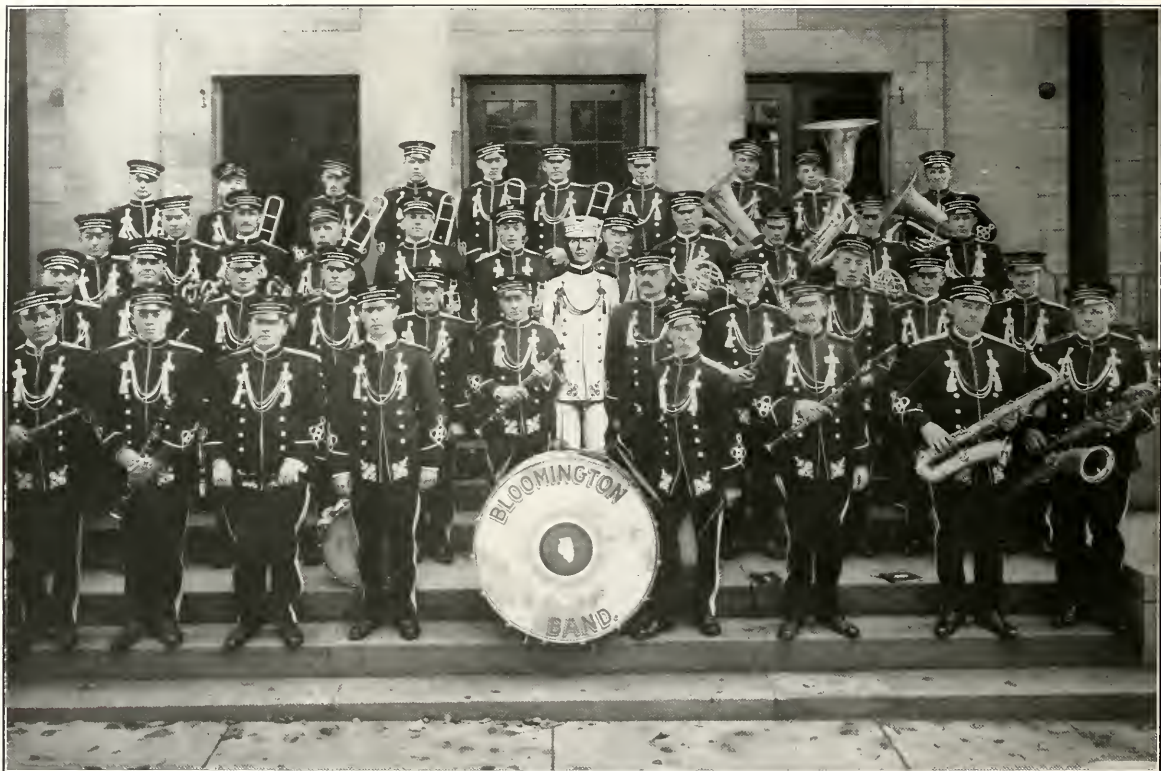


EVANS BROTHERS. The Quality Grocery



PORTABLE ELEVATOR MFG. CO.

Manufacturers of "Little Giant" and "National Giant" Portable and Stationary Wagon Dumps and Grain Elevators



John Stelton
 Fred Erdman
 John Thoennis
 Herman Noe
 Fred Hacker
 Eddie Apelt

Chas. Browning
 Carl Bickel
 Vincent Dornaus
 Eugene Phillips
 Eddie Gill
 Arthur Dornaus

John Barth
 Otto Thoennis
 Joe Thoennis
 Fred Schroeder
 Gustave Eberding
 Oliver Helmick

O. T. Thorsen
 Ernest Miller
 Will Peterson

MEMBERS OF BLOOMINGTON BAND

Geo. W. Marton, Director

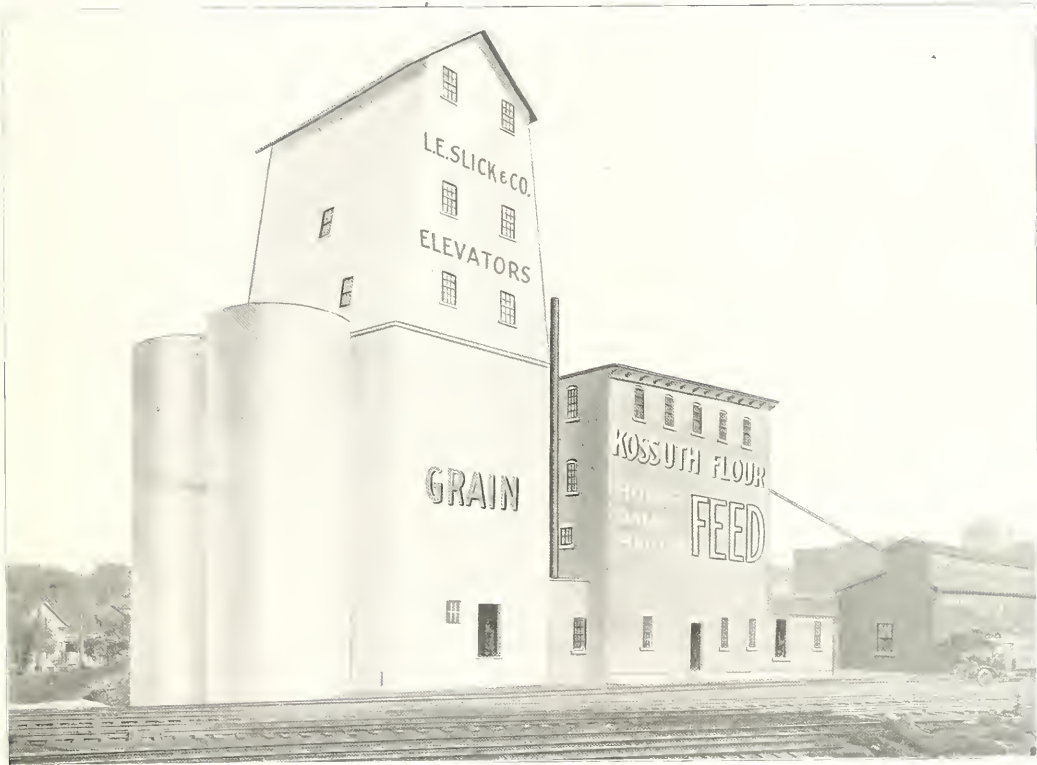
Dr. A. T. Strange
 Bernard B. Smith
 Joe Schneeberger

Frank Thoennis
 Walter Dornaus
 Louis Bullinger

Pat Mahar
 Rudy Dornaus
 Frank Apelt
 Geo. Robinson
 R. A. Ensign
 Dean Albee

Frank Padgett
 Will Ehrmantraut
 Geo. Ehrmantraut
 Will Thompson
 Geo. Goforth
 Earl Goforth

William Fithian
 Peter Dornaus
 Gustave Apelt
 Paul Burke
 Arthur Condon



View of Grain Elevator, Mill and Sacked Grain Warehouse

L. E. SLICK & COMPANY

Grain, Flour and Feed



Flour Warehouse



Sales Manager's Office and Portion of President's Office



Accounting Department

L. E. SLICK & COMPANY

Grain, Flour and Feed



Lily Pond
and Fountain
Miller Park

Herd of
Deer at
Miller
Park





Boulevard Connecting Normal with Bloomington



Reservoir Bloomington's Municipal Water Plant



Brokaw Hospital



St. Joseph's Hospital

PANTAGRAPH PRINTING & STATIONERY CO.

PRINTING, BINDING, OFFICE SUPPLIES



A PHYSICAL
ASSURANCE THAT ALL
OF BLOOMINGTON'S PRINTING
MAY STAY AT HOME AND RECEIVE AS FAIR
AND EFFICIENT TREATMENT, AS ANY PLACE IN THE COUNTRY

A TRAINED FORCE
OF OVER ONE HUNDRED FIFTY
A SPRINKLER EQUIPPED BUILDING

